

DREAM KITCHEN

Create an island oasis in your kitchen with TIBMA

BY MELISSA SACK AND MARY TIBMA

Adding an island to your kitchen is both functional and stylish.

Mary Tibma of TIBMA Design/Build in Needham provided advice for three very different-look-

ing kitchen islands. Various materials can be used to give visual impact as well as to define the different functions of the space. For example, in a two-level island, a mahogany top is distinguished from the work surface and provides an elegant seating area.

Tibma also says shapes can be customized to reflect the size of the space or make a real statement in a kitchen. Finally, the design shouldn't stop with the countertops themselves; interesting materials can be used for the base of the island, too.

Mary's husband, Dan Tibma, provided a list of things that are considerations that he discusses with clients.

Are they looking for a visual block to conceal the dirty dishes? If so, they might consider a two-tiered island.

Will there be appliances on the island? If so, a safety barrier between family members and the appliance might be incorporated.

Will there be seating at the island? If so, knee depth is important and is dictated by the height of the counter and clearance between a seated person and walls or cabinets should be considered.

How many cooks are in the



This kitchen has a two-level island. The work surface is made of Hawaiian green granite and the raised portion of the island is made of mahogany.

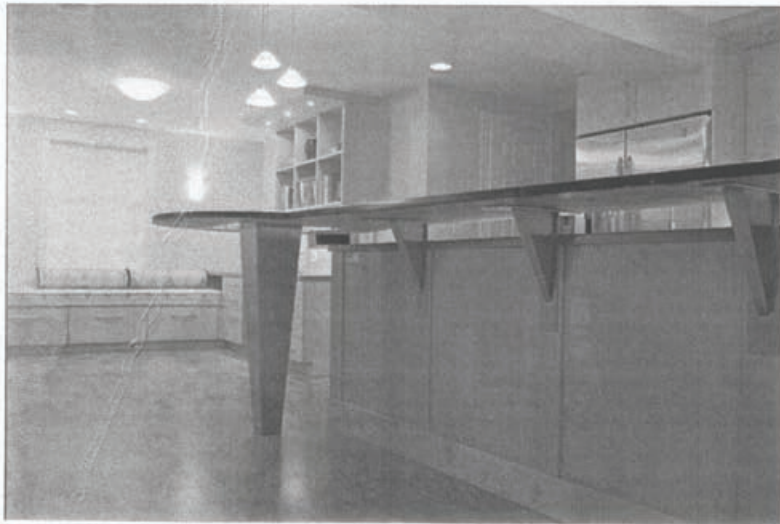
PHOTOS COURTESY OF TIBMA/DESIGN BUILD

kitchen? Clearances between countertops are dependent on whether there are one or two cooks.

What will you be doing on the island? If you want to read the paper, make the counter deep enough. If you will be using electrical appliances or a laptop, think about where you want the outlets.

TIBMA Design/Build is a Need-

ham-based home design and remodeling firm that specializes in kitchens, baths, home addition, and complete home remodels. Its team of professional experts focuses on functionality and individual style, while ensuring high-touch service and personalized attention to each and every client. Visit their Web site at <http://www.tibmadesignbuild.com/default.htm> or call 781-453-0414.



There are different levels on this island; one is a gray Corian and the upper level is a brilliant blue Silestone. Contemporary materials were added to the base to make it visually interesting.